

State of Wyoming Corner Record

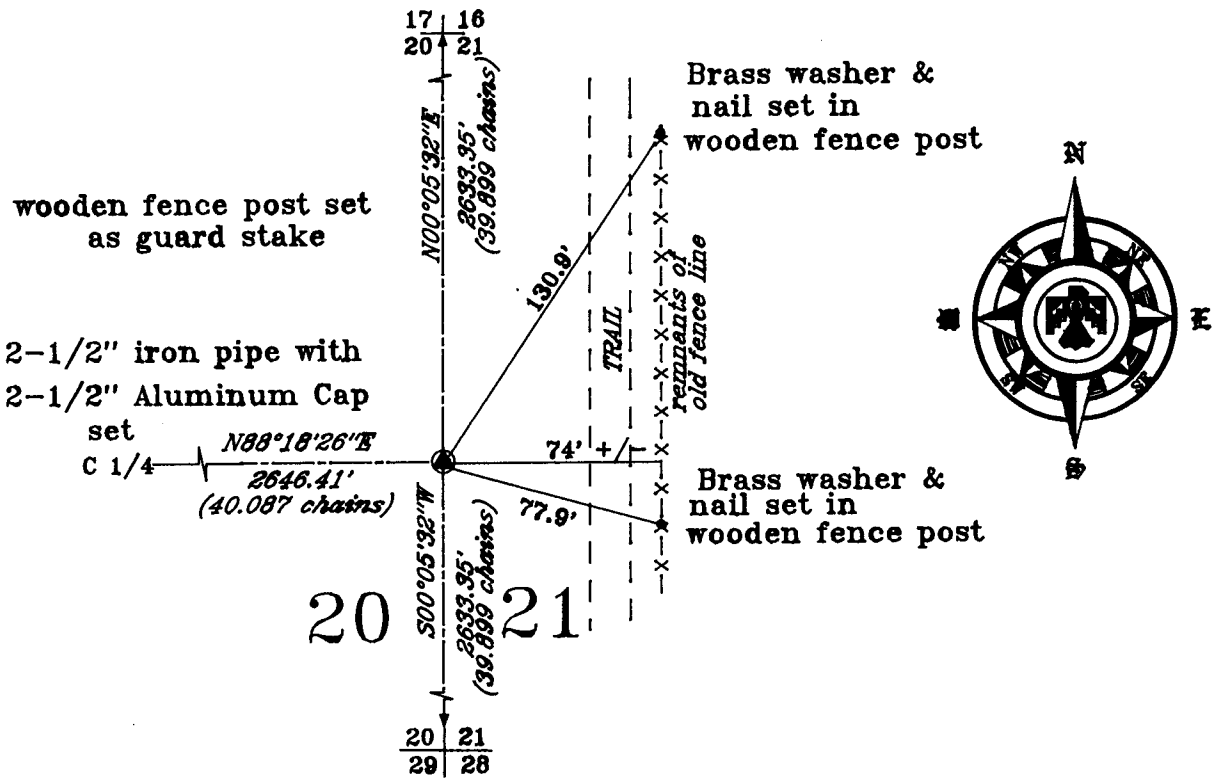
(In compliance with the CORNER PERPETUATION AND FILING ACT, Wyoming Statutes, 1977, Section 36~11~101, et seq., and the Rules and Regulations of the Board of Registration for Professional Engineers and Professional Land Surveyors)

The reverse side of this form may be used if more space is needed.

The Record of the original survey and the citation of the source of the historical information (if the corner is lost or obliterated). The description of the corner monumentation evidence as found and/or the monument and it's accessories as established to perpetuate the location of this corner. A sketch of the relative location of this Monument, accessories, and reference points with the course and distance to adjacent corner (s) (if determined during this Survey). The Method and Rationale used for the reestablishment of lost and obliterated corner.

GLO Survey performed by Edwin James and Alfred M. Rogers in A.D. 1871
 ... North between Sections 20 and 21 (Variation 15.35'E) 40.00 chains set Granite Stone 16"X10"X8" for quarter Section Corner,....

Corner was lost and was re established by single proportionate methods from the Re Established Section Corner of Sections 16,17,20 & 20 on the North and the Section corner found for Sections 20,21,28 & 29. Set 34" long 2-1/2" iron pipe with a 2-1/2" Aluminum Cap as shown on the drawing below.



Date of Field Work: June 1999 Office Reference: 9030

Cross Index Diagram

T. 14 N. R. 63 W. 6th P.M.

1	2	3	4	5	6	7	8	9	10	11	12	13	14	15	16	17	18	19	20	21	22	23	24	25	
A																									
B																									
C																									
D																									
E																									
F																									
G																									
H																									
I																									
J																									
K																									
L																									
M																									
N																									
O																									
P																									
Q																									
R																									
S																									
T																									
U																									
V																									
W																									
X																									
Y																									
Z																									

Firm/Agency, Address
 Terrestrial Surveying & Mapping Co.
 "Your Friendly Neighborhood Surveyor"
 1127 Terry Ranch Road
 Cheyenne, Wyoming 82007
 Telephone Number: (307) 634-9360

This Corner Record was prepared by me or under my direction and supervision.

SEAL & SIGNATURE

